

# Protist Diagram

Give a Name to each of the four boxes on the back. Label each part using your book, information from the videos, or on line sources. When you are finished, check your answers in the file. Correct any answers that are not right.

Then, use what you know about the protists to complete following.

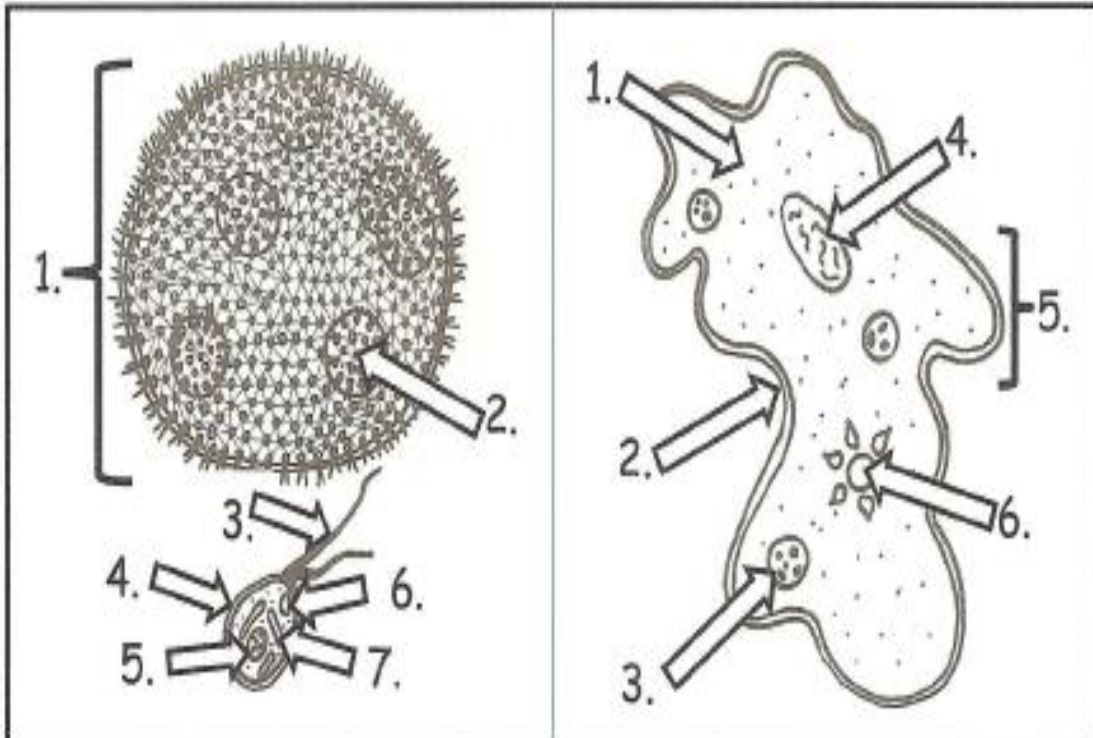
Write A if the statement describe an amoeba; E if euglena; P if paramecium, or V if volvox. You may write more than one letter on each blank.

- \_\_\_\_\_ 1. is a heterotroph
- \_\_\_\_\_ 2. is an autotroph
- \_\_\_\_\_ 3. is "mixotroph" – both
- \_\_\_\_\_ 4. has pseudopods to move/eat
- \_\_\_\_\_ 5. has cilia to move/eat
- \_\_\_\_\_ 6. has flagella to move or move/eat
- \_\_\_\_\_ 7. has chloroplasts
- \_\_\_\_\_ 8. reproduces sexually
- \_\_\_\_\_ 9. lives as an individual cell
- \_\_\_\_\_ 10. lives as a colony
- \_\_\_\_\_ 11. reproduces asexually
- \_\_\_\_\_ 12. has a nucleus

Name: \_\_\_\_\_

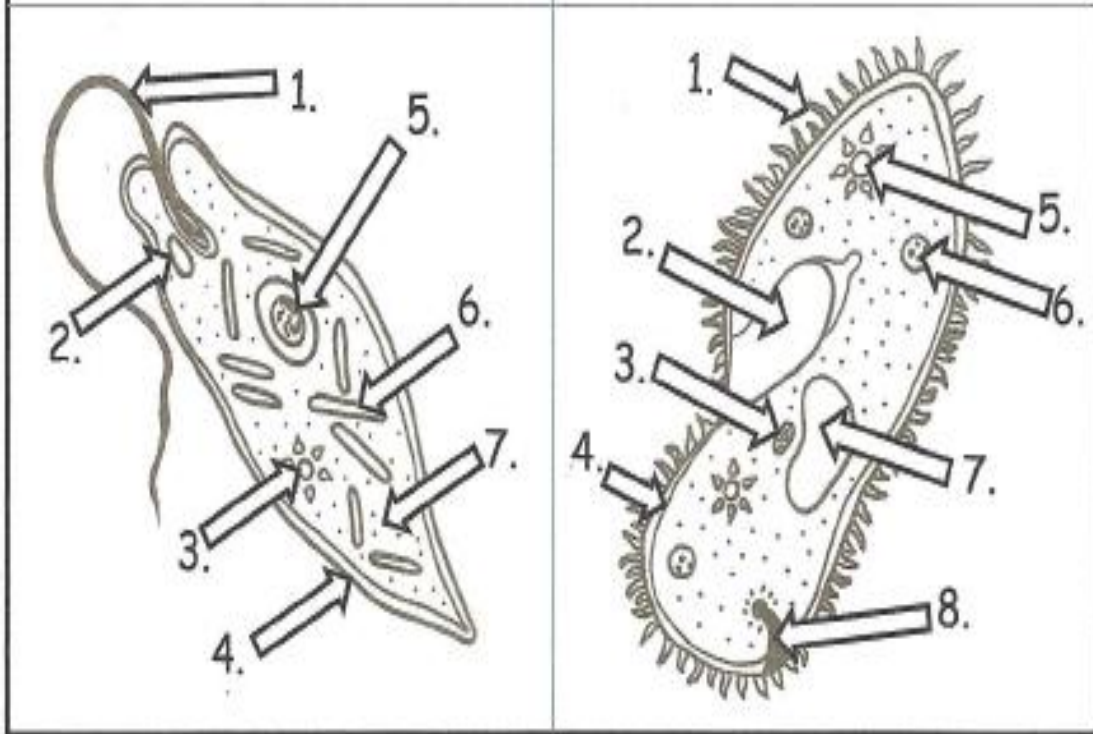
Name: \_\_\_\_\_

- 1.
- 2.
- 3.
- 4.
- 5.
- 6.
- 7.



- 1.
- 2.
- 3.
- 4.
- 5.
- 6.

- 1.
- 2.
- 3.
- 4.
- 5.
- 6.
- 7.



- 1.
- 2.
- 3.
- 4.
- 5.
- 6.
- 7.
- 8.

Name: \_\_\_\_\_

Name: \_\_\_\_\_

Write "A" if the statement describes an amoeba, "E" if euglena, "P" if paramecium, or "V" if Volvox. You may have to write more than one letter on each blank

- A, P 1. is a heterotroph
- V 2. is an autotroph
- E 3. is a mixotroph
- A 4. has pseudopods to move/eat
- P 5. has cilia to move/eat
- E, V 6. has flagella to move or move/eat
- E, V 7. has chloroplasts
- V, P, A 8. reproduces sexually (*as of March 2011, rare instances of amoeba sexual reproduction have been noted.*)
- A, E, P 9. lives as an individual cell
- V 10. lives as a colony
- A, E, P, V 11. reproduces asexually
- A, E, P, V 12. has a nucleus